

Mastering JEE(Main)



- Ensuring High Score in JEE

About JEE

- Joint Entrance Exam
- Entrance Exam to get admission in Engineering
- Given by: 12th Std. Science Students

...About JEE

Subjects	Types of Q's	Mode of Exam	Language
PCM	Objective with equal weightage to PCM	Pen & Paper OR Computer based	English, Hindi, Marathi or Urdu

Paper Pattern

- Duration: 3 Hrs.
- Each correct 4 marks
- Wrong answer -1 Mark (25%)

...Paper Pattern

Subject	Number of Questions	Marks
Physics	30	120
Chemistry	30	120
Mathematics	30	120
TOTAL		360

Weightage & Ranking

- For admissions in Engineering colleges in Maharashtra: 50% JEE (Main) & 50% Board Exams
- For admissions in Centrally funded Engineering colleges: 60% JEE (Main) & 40% Board Exams

What has changed from last
year for students from
Maharashtra?

...

2013: Multiple Tests



2014: One Nation One Test accepted by Maharashtra



Present Scenario
v/s
Current Scenario
...

PRESENT SCENARIO

Multiple entrance
examinations for getting
into Engineering colleges

CHANGED SCENARIO

Single Test for
Engineering

PRESENT SCENARIO

Students treat 11th
Standard as rest year

CHANGED SCENARIO

Syllabus for JEE
comprises of 11th
Standard syllabus as
well

PRESENT SCENARIO

No weightage for
Board examination

CHANGED SCENARIO

40% weightage for
board examination

PRESENT SCENARIO

For Maharashtra state
CET time was the only
factor important

CHANGED SCENARIO

Concept clarity will
play major role in
candidate's success

Expected students every year...



MKCL's Mission JEE

- MKCL wants to help the students in this changing scenario by providing:
 - Best practice material at low cost
 - Rigorous practice
 - Concept fixation
 - Performance Gap Analysis
 - Simulated JEE Environment

We present...



Mastering JEE (Main)

About Test Series

Duration, Tests, Features and Fees

For whom are we
providing ?

Eligibility

1. 12th Std. Students:
Preparing for JEE(Main) –
2015
2. 11th Std. Students:
Preparing for JEE(Main) –
2016



Our Offering

Product !

1. Chapter wise tests
2. Combo tests
3. Preliminary tests
4. Exploriments

...Product

Type of test per subject	Number of tests per subject	
	11 th Standard	12 th Standard
Chapter-wise tests	67	74
Combo tests	59	66
Preliminary Test	21	21
Total	147	161

Features

...

What different are we providing ?

Systematic study plan



Conceptual distractors

When someone has trouble seeing far-away objects properly, what eye disorder is he/she suffering from?

- Myopia
- Presbyopia
- Hypermetropia
- Retinoblastoma

The difference between the options is very fine. Hence it forces the student to be extremely thorough with his/her concepts.

Detailed GAP analysis



- **Brief Scorecard**
- **Question wise analysis**
- **Topic wise analysis**
- **Difficulty level wise analysis**

Downloads detailed
feedback in the form of
PDF after every test

Exploriments

- Laboratory in Computer !
- 400+ experiments in students log in
- Perform as many times you want
- Get crystal clear “Concept Clarity”



How are we providing ?

...

At Mastering JEE Centers which are...

@ MS-CIT
centers

@ Junior
Science
Colleges

Delivery @ JEE Centers

- Mastering JEE would be available in 5500 MS-CIT centers and junior science colleges across Maharashtra
- Students would visit the MS-CIT center/colleges to give tests

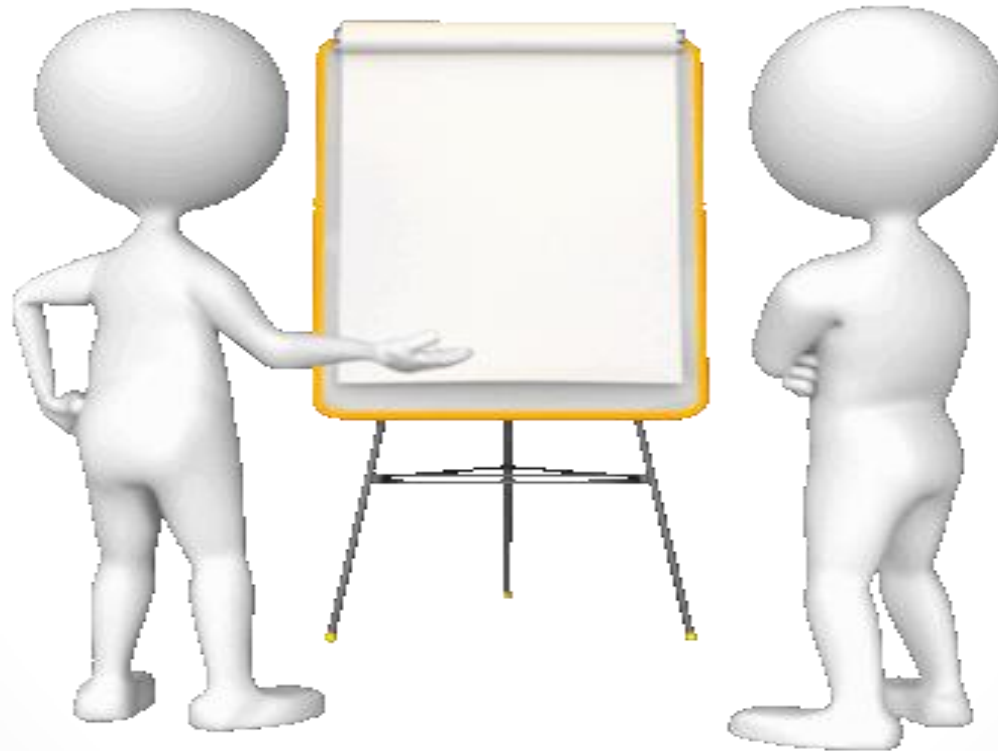


Methodology

- One super admin log in for Centers
- Chapter Wise tests: Student schedules his/her own test every week
- Combo tests: Generates automatically
- Preliminary Tests: All available in log in from November
- Test available in student's log in for 4 weeks after which it disappears

Students Life Cycle

1. MS-CIT centers approaches students and counsels them



2. Students pays fees



3. Students schedule their tests and starts preparing



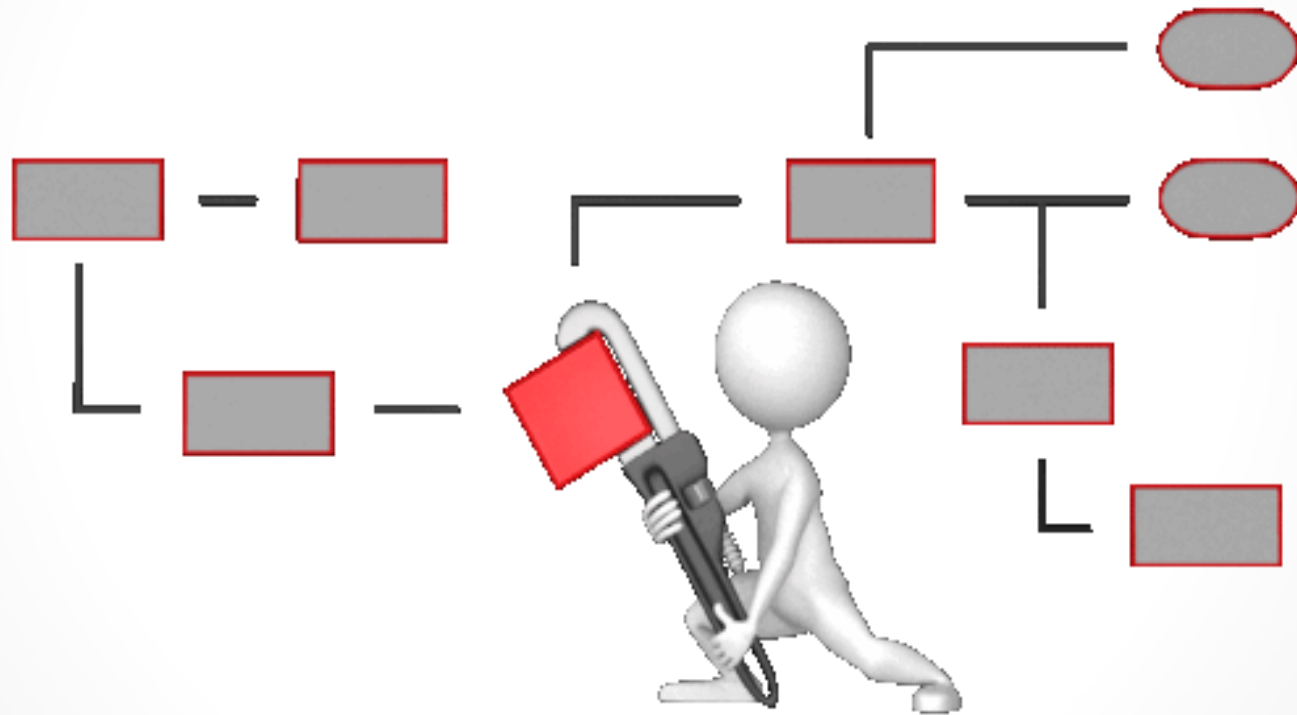
4. Gives chapter wise tests and combo tests every week



5. Takes away detailed analysis/feedback everyday



6. Works upon according to feedback



7. Gives HSC Board exams

Student of Mastering
JEE

Not a Student of
Mastering JEE



Benefit for students in HSC Board Exams

- All chapters of 12th std. already covered
- With detailed feedback student knows his/her GAPS
- 50% weightage in JEE (Main)

8. Starts Full Portion tests



9. With our help student succeeds in JEE (Main)



How much are we charging?

Fees

Rs. 4000



Q & A

...